



# Dordon Community Primary School

## Class plan - Kingfisher 23-24 Cycle A



# Childhood History

## Companions

- Our Wonderful World Geography
- Shade and Shelter Design and technology
- Mix It (Y1) Art and design
- Funny Faces and Fabulous Features Art and design
- Everyday Materials Science
- Human Senses Science

## Planned term

Autumn

## Memorable experience

Childhood past and present = Visit to Museum of childhood. [Funny Faces and Fabulous Features] - Exploring portraits

## Innovate challenge

Childhood knowledge organisers. [Our Wonderful World] - Geographical enquiry. [Shade and Shelter] - Designing and building a play den. [Mix It (Y1)] - Colour challenge. [Funny Faces and Fabulous Features] - Collage creators. [Everyday Materials] - Let's investigate focus: Observing, measuring and recording

## English

Autobiographies; Non-chronological reports; Riddles

## Religious education

Harvest Diwali Christmas

## Geography

Settlements; Changes over time. [Our Wonderful World] - Physical and human features; Picture maps; Cardinal compass points; Equator and hemispheres; Continents; Oceans; Countries and capital cities of the UK; Protecting natural environments; Fieldwork

## Computing

Internet Safety Logging on.

## Art and design

[Mix It (Y1)] - Colour theory; Colour wheel; Primary and secondary colours. [Funny Faces and Fabulous Features] - Portraiture; Collage

## Design and technology

[Shade and Shelter] - Investigating existing products; Designing and making shelters and dens; Prototypes; Safety rules; Materials. [Funny Faces and Fabulous Features] - Stitching to join materials; Embellishing

## History

Historical vocabulary; Historical artefacts; Timelines; Everyday life and childhood in the 1950s; Significant events – Queen's coronation; Enquiry

## Music

Charanga

## Personal, social and health education

Families and Friendships Safe Relationships Respecting ourselves and others

## Science

[Shade and Shelter] - Naming everyday materials; Properties and uses of materials. [Everyday Materials] - Materials; Natural materials; Human-made materials; Grouping materials; Properties of materials; Venn diagrams; Comparing and testing materials; Working scientifically – Identifying and classifying, Observing changes over time, Comparative test, Pattern seeking, Research

## Physical education

Fundamentals Teambuilding Gymnastics Yoga



# Y1 WRM – Autumn (v3.0) Mathematics

## Mathematics

Block 1: Number – Place value; Block 2: Number – Addition and subtraction; Block 3: Geometry – Shape



## Our Wonderful World Geography

**Innovate challenge**  
Geographical enquiry

**Geography**  
Physical and human features; Picture maps; Cardinal compass points; Equator and hemispheres; Continents; Oceans; Countries and capital cities of the UK; Protecting natural environments; Fieldwork



## Shade and Shelter Design and technology

**Memorable experience**  
Investigating shelters

**Innovate challenge**  
Designing and building a play den

**Design and technology**  
Investigating existing products; Designing and making shelters and dens; Prototypes; Safety rules; Materials

**Science**  
Naming everyday materials; Properties and uses of materials



## Mix It (Y1) Art and design

**Innovate challenge**  
Colour challenge

**Art and design**  
Colour theory; Colour wheel; Primary and secondary colours



## Funny Faces and Fabulous Features Art and design

**Memorable experience**  
Exploring portraits

**Innovate challenge**  
Collage creators

**Art and design**  
Portraiture; Collage

**Design and technology**  
Stitching to join materials; Embellishing



## Everyday Materials Science

**Innovate challenge**  
Let's investigate focus: Observing, measuring and recording

**Science**  
Materials; Natural materials; Human-made materials; Grouping materials; Properties of materials; Venn diagrams; Comparing and testing materials; Working scientifically – Identifying and classifying, Observing changes over time, Comparative test, Pattern seeking, Research



Human Senses

Science



Bright Lights, Big City

Geography

Memorable experience

Local landmarks

Innovate challenge

Marley's trip to London

English

Postcards; Directions; Adventure narratives

Geography

Local landmarks; Countries and capital cities of the UK; Physical features of the UK; Settlements; Human features; Weather and seasons; London – a capital city; Landmarks; Aerial images; Maps; Directions – locational and directional language; Geographical similarities and differences

Computing

Searching the web; Algorithms; Logical reasoning; Programming; Common uses of information technology

Art and design

Drawing

History

Significant event – Great Fire of London

Music

Nursery rhymes

Personal, social and health education

Speaking, listening and sharing



Y1 WRM – Spring (v3.0)

Mathematics

Mathematics

Block 1: Number – Place value; Block 2: Number – Addition and subtraction; Block 3: Number – Place value; Block 4: Measurement – Length and height; Block 5 – Measurement – Mass and volume



# Bright Lights, Big City

Geography

## Companions

- Taxi! Design and technology
- Seasonal Changes Science
- Rain and Sunrays Art and design

## Planned term

Spring

## Memorable experience

Royal role play. [Taxi!] - Investigating wheels, axles and chassis.

## Innovate challenge

Marley's trip to London. [Taxi!] - Making a London taxi. [Seasonal Changes] - Let's investigate focus: Asking and answering questions. [Rain and Sunrays] - Creating weather collagraphs

## English

Information posters; Directions; Adventure narratives

## Religious education

Milad un Nabi - Islam Purim - Judaism Easter

## Geography

Countries and capital cities of the UK; Physical features of the UK; Settlements; Human features; Weather and seasons; Landmarks; Aerial images; Locational language; Maps; Compass directions; Geographical similarities

## Computing

Searching the web; Algorithms; Logical reasoning; Programming; Common uses of information technology

## Art and design

Drawing. [Rain and Sunrays] - Motifs; Line and shape; Texture; Collagraphy

## Design and technology

[Taxi!] - Mechanisms – wheels, axles and chassis

## History

Monarchy; Significant event – Great Fire of London

## Music

Nursery rhymes

## Personal, social and health education

Belonging to a community Media literacy and digital resilience Money and work

## Science

[Seasonal Changes] - Seasons; Seasonal changes in deciduous and evergreen trees; Seasonal changes in animals; Weather; Seasonal weather; Day length; Investigating the Sun; Measuring wind; Measuring temperature; Measuring precipitation; Weather forecasting; Working scientifically – Observing changes over time, Identifying and classifying, Pattern seeking, Comparative test, Research

## Physical education

Yoga Dance Net and wall Send and receive



## School Days History

### Companions

- Street View Art and design
- Chop, Slice and Mash Design and technology
- Plant Parts Science
- Animal Parts Science

### Planned term

Summer

### Memorable experience

Our school's history. [Street View] - Exploring street views. [Chop, Slice and Mash] - Investigating sources of food

### Innovate challenge

Planning an assembly. [Street View] - Mural makers. [Chop, Slice and Mash] - Designing and making a supermarket sandwich. [Plant Parts] - Let's investigate focus: Reporting and concluding. [Animal Parts] - Let's investigate focus: Observing, measuring and recording

### English

List poems; Diaries; Letters

### Religious education

Naam Karan (Sikism) Esala Perahera (Buddhism)

### Geography

Fieldwork; Human and physical features; Maps; Local environment; Changes over time

### Art and design

[Street View] - 3-D murals; Buildings; Significant people – James Rizzi

### Design and technology

[Chop, Slice and Mash] - Sources of food; Food preparation techniques; Hygiene rules; Designing and making salads and sandwiches

### History

Historical vocabulary; Historical artefacts; Timelines; Present day schools; Our school; Victorian era; Victorian schools; Significant people – Samuel Wilderspin

### Personal, social and health education

Physical health and mental wellbeing Growing and changing Keeping safe

### Science

[Plant Parts] - Wild and garden plants; Seasonal changes; Plant parts; Seeds and bulbs; Investigating leaves; Importance of plants; Working scientifically – Identifying and classifying, Observing changes over time, Pattern seeking, Research, Comparative test. [Animal Parts] - Animals' body parts; Animal groups – amphibians, birds, fish, invertebrates, mammals, reptiles; Carroll and Venn diagrams; Pets; Carnivores, herbivores and omnivores; Earthworms; Working scientifically – Identifying and classifying, Comparative test, Pattern seeking, Research

### Physical education

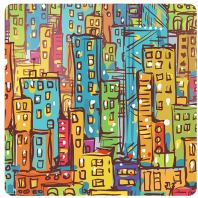
Send and receive Ball skills Athletics Target games



## Y1 WRM – Summer (v3.0) Mathematics

### Mathematics

Block 1: Number – Multiplication and division; Block 2: Number – Fractions; Block 3: Geometry – Position and direction; Block 4: Number – Place value (within 100); Block 5 – Measurement – Money; Block 6 – Measurement – Time



## Street View **Art and design**

### Memorable experience

Exploring street views

### Innovate challenge

Mural makers

### Art and design

3-D murals; Buildings; Significant people – James Rizzi



## Chop, Slice and Mash **Design and technology**

### Memorable experience

Investigating sources of food

### Innovate challenge

Designing and making a supermarket sandwich

### Design and technology

Sources of food; Food preparation techniques; Hygiene rules; Designing and making salads and sandwiches



## Plant Parts **Science**

### Innovate challenge

Let's investigate focus: Reporting and concluding

### Science

Wild and garden plants; Seasonal changes; Plant parts; Seeds and bulbs; Investigating leaves; Importance of plants; Working scientifically – Identifying and classifying, Observing changes over time, Pattern seeking, Research, Comparative test



## Animal Parts **Science**

### Innovate challenge

Let's investigate focus: Observing, measuring and recording

### Science

Animals' body parts; Animal groups – amphibians, birds, fish, invertebrates, mammals, reptiles; Carroll and Venn diagrams; Pets; Carnivores, herbivores and omnivores; Earthworms; Working scientifically – Identifying and classifying, Comparative test, Pattern seeking, Research



## Y1 Computing **Computing**

### Computing

Staying safe online; Algorithms; Programming and debugging; Using data



Esala Perahera Religious education

Planned term

Autumn 1

Memorable experience

Imaginary trip to Sri Lanka

Innovate challenge

Exploring remembering and memories

Religious education

Buddha; Sacred places; Memories and remembering



Harvest Religious education

Planned term

Autumn 2

Memorable experience

Making crumble

Innovate challenge

Thinking about sharing

Religious education

Harvest; Sharing



Purim Religious education

Planned term

Spring 1

Memorable experience

Make some noise

Innovate challenge

Thinking about gifts

Religious education

Special clothes; Story of Esther; Purim customs; Gifts



Milad un Nabi Religious education

Planned term

Spring 2

Memorable experience

Birthday celebrations

Innovate challenge

Thinking about leadership

Religious education

Muhammad; The first Muslim; Leadership





Diwali

Religious education

Planned term

Summer 1

Memorable experience

Making diva lamps

Innovate challenge

Exploring good luck

Religious education

Diva lamps; New beginnings; Diwali traditions; Luck



Naam Karan

Religious education

Planned term

Summer 2

Memorable experience

Nursery role play

Innovate challenge

Exploring family

Religious education

Gurdwara; Guru Granth Sahib; Naming ceremony; Families