



Dordon Community Primary School

Class plan - Kingfisher 24-25 Cycle A



Childhood **History**

Companions

- Our Wonderful World **Geography**
- Shade and Shelter **Design and technology**
- Mix It (Y1) **Art and design**
- Funny Faces and Fabulous Features **Art and design**
- Everyday Materials **Science**
- Human Senses **Science**

Planned term

Autumn

Memorable experience

Childhood past and present = Visit to Museum of childhood. [Funny Faces and Fabulous Features] - Exploring portraits

Innovate challenge

Childhood knowledge organisers. [Our Wonderful World] - Geographical enquiry. [Shade and Shelter] - Designing and building a play den. [Mix It (Y1)] - Colour challenge. [Funny Faces and Fabulous Features] - Collage creators. [Everyday Materials] - Let's investigate focus: Observing, measuring and recording

English

The Tiger Who Came to Tea? Where the Wild Things Are? The Dark? Rapunzel?

Religious education

Harvest Diwali (Hinduism)

Geography

Our Wonderful World Physical and human features Picture maps Cardinal compass points Equator and hemispheres Continents Oceans Countries and capital cities of the UK Protecting natural environments

Computing

Online safety Grouping and sorting (Maths) Pictograms

Art and design

Mix It Colour theory Colour wheel Primary and secondary colours Funny Faces and Fabulous Features Portraiture Collage

Design and technology

Shade and Shelter Investigating existing products Designing and making shelters and dens Prototypes Safety rules Materials

History

Childhood Historical vocabulary Historical artefacts Timelines Everyday life and childhood in the 1950s Significant events – Queen's coronation Enquiry

Music

My Musical Heartbeat Dance, Sing and Play!

Personal, social and health education

Being Safe 1 Mental wellbeing 1 Different roles of people and families Protective Behaviours

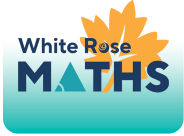
Science

Everyday Materials Materials Natural materials Human-made materials Grouping materials Properties of materials Venn diagrams Comparing and testing materials Working scientifically (identifying and classifying, observing changes, comparative test, research)

Physical education

Fundamentals Fitness Gymnastics Yoga

Y1 WRM – Autumn (v3.0) **Mathematics**



Mathematics

Block 1: Number – Place value; Block 2: Number – Addition and subtraction; Block 3: Geometry – Shape



Our Wonderful World **Geography**

Innovate challenge

Geographical enquiry

English

The Weather Monster Chicken Licken

Geography

Physical and human features; Picture maps; Cardinal compass points; Equator and hemispheres; Continents; Oceans; Countries and capital cities of the UK; Protecting natural environments; Fieldwork



Shade and Shelter **Design and technology**

Memorable experience

Investigating shelters

Innovate challenge

Designing and building a play den

Design and technology

Investigating existing products; Designing and making shelters and dens; Prototypes; Safety rules; Materials

Science

Naming everyday materials; Properties and uses of materials



Mix It (Y1) **Art and design**

Innovate challenge

Colour challenge

Art and design

Colour theory; Colour wheel; Primary and secondary colours



Funny Faces and Fabulous Features **Art and design**

Memorable experience

Exploring portraits

Innovate challenge

Collage creators

Art and design

Portraiture; Collage

Design and technology

Stitching to join materials; Embellishing



Everyday Materials **Science**

Innovate challenge

Let's investigate focus: Observing, measuring and recording

Science

Materials; Natural materials; Human-made materials; Grouping materials; Properties of materials; Venn diagrams; Comparing and testing materials; Working scientifically – Identifying and classifying, Observing changes over time, Comparative test, Pattern seeking, Research



Human Senses **Science**



Bright Lights, Big City **Geography**

Companions

- Rain and Sunrays **Art and design**

Memorable experience

Local landmarks

Innovate challenge

Marley's trip to London

English

The Dark Katie in London Halibut Jackson

Geography

Local landmarks; Countries and capital cities of the UK; Physical features of the UK; Settlements; Human features; Weather and seasons; London – a capital city; Landmarks; Aerial images; Maps; Directions – locational and directional language; Geographical similarities and differences

Computing

Searching the web; Algorithms; Logical reasoning; Programming; Common uses of information technology

Art and design

Drawing

History

Significant event – Great Fire of London

Music

Nursery rhymes

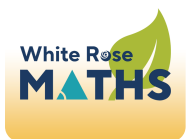
Personal, social and health education

Speaking, listening and sharing

Y1 WRM – Spring (v3.0) **Mathematics**

Mathematics

Block 1: Number – Place value; Block 2: Number – Addition and subtraction; Block 3: Number – Place value; Block 4: Measurement – Length and height; Block 5 – Measurement – Mass and volume





Bright Lights, Big City **Geography**

Companions

- Taxi! **Design and technology**
- Seasonal Changes **Science**

Planned term

Spring

Memorable experience

Royal role play. [Taxi!] - Investigating wheels, axles and chassis.

Innovate challenge

Marley's trip to London. [Taxi!] - Making a London taxi. [Seasonal Changes] - Let's investigate focus: Asking and answering questions. [Rain and Sunrays] - Creating weather collagraphs

English

Information posters; Directions; Adventure narratives

Religious education

Naam Karan (Sikhism) Purim (Judaism)

Geography

Bright Lights, Big City Countries and capital cities of the UK Physical features of the UK Settlements Human features Weather and seasons Landmarks Aerial images Locational language Maps Compass directions Compass directions Geographical similarities

Computing

Unit 3 – programming A – Moving a robot Unit 4 – Data and information – Grouping data

Art and design

Rain and Sun Rays Motifs Line and shape Texture Collagraphy

Design and technology

Taxi Mechanisms Wheels, axles and chassis

History

Monarchy; Significant event – Great Fire of London

Music

Exploring Sounds Learning to Listen

Personal, social and health education

Families and people who care 1 Respectful relationships 2 Rules – Looking after others Caring for local environment Jobs in the community

Science

Seasonal Changes Seasons Seasonal changes in deciduous and evergreen trees Seasonal changes in animals Weather Seasonal weather Day length Investigating the sun Measuring wind Measuring temperature Measuring precipitation Weather forecasting Working scientifically (observing changes over time, identifying and classifying, pattern seeking, comparative test, research)

Physical education

Target games Send and receive Ball skills Team building



Rain and Sunrays **Art and design**

Memorable experience

Weather motifs

Innovate challenge

Creating weather collagraphs

Art and design

Motifs; Line and shape; Texture; Collagraphy



School Days **History**

Companions

- Street View **Art and design**
- Chop, Slice and Mash **Design and technology**
- Plant Parts **Science**
- Animal Parts **Science**

Planned term

Summer

Memorable experience

Our school's history. [Street View] - Exploring street views. [Chop, Slice and Mash] - Investigating sources of food

Innovate challenge

Planning an assembly. [Street View] - Mural makers. [Chop, Slice and Mash] - Designing and making a supermarket sandwich. [Plant Parts] - Let's investigate focus: Reporting and concluding. [Animal Parts] - Let's investigate focus: Observing, measuring and recording

English

Traditional tales Hansel and Gretel Rapunzel The Jolly Postman Take one poet-Julia Donaldson

Religious education

Milad un Nabi (Islam) Esala Perahera (Buddhism)

Computing

Unit 5 – Creating media – Digital writing Unit 6 – Programming animations

Art and design

Street View 3D murals Buildings Significant people – James Rizzi

Design and technology

Chop, Slice and Mash Sources of food Food preparation techniques Hygiene rules Designing and making salads and sandwiches

History

School Days Historical vocabulary Historical artefacts Timelines Present day schools Our school Victorian era Victorian schools Significant people – Samuel Wilderspin

Music

Having Fun with Improvisation Let's Perform Together!

Personal, social and health education

Keeping healthy – food and exercise Sun safety What makes us unique Feelings

Science

Plant Parts Wild and garden plants Seasonal changes Plant parts Seeds and bulbs Investigating leaves Importance of plants Working scientifically (Identifying and classifying, Observing changes over time, Pattern seeking, Research, Comparative test) Animal Parts Animals' body parts Animal groups – amphibians, birds, fish, invertebrates, mammals, reptile Carroll and Venn diagrams Pets Carnivores, herbivores and omnivores Earthworms Working scientifically (Identifying and classifying, Comparative test, Pattern seeking, Research)

Physical education

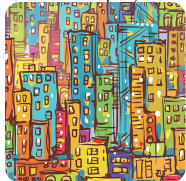
Dance Invasion Athletics Net and wall

Y1 WRM – Summer (v3.0) **Mathematics**

Mathematics

Block 1: Number – Multiplication and division; Block 2: Number – Fractions; Block 3: Geometry – Position and direction; Block 4: Number – Place value (within 100); Block 5 – Measurement – Money; Block 6 – Measurement – Time





Street View **Art and design**

Memorable experience

Exploring street views

Innovate challenge

Mural makers

Art and design

3-D murals; Buildings; Significant people – James Rizzi



Chop, Slice and Mash **Design and technology**

Memorable experience

Investigating sources of food

Innovate challenge

Designing and making a supermarket sandwich

Design and technology

Sources of food; Food preparation techniques; Hygiene rules; Designing and making salads and sandwiches



Plant Parts **Science**

Innovate challenge

Let's investigate focus: Reporting and concluding

Science

Wild and garden plants; Seasonal changes; Plant parts; Seeds and bulbs; Investigating leaves; Importance of plants; Working scientifically – Identifying and classifying, Observing changes over time, Pattern seeking, Research, Comparative test



Animal Parts **Science**

Innovate challenge

Let's investigate focus: Observing, measuring and recording

Science

Animals' body parts; Animal groups – amphibians, birds, fish, invertebrates, mammals, reptiles; Carroll and Venn diagrams; Pets; Carnivores, herbivores and omnivores; Earthworms; Working scientifically – Identifying and classifying, Comparative test, Pattern seeking, Research



Y1 Computing **Computing**

Computing

Staying safe online; Algorithms; Programming and debugging; Using data



Esala Perahera **Religious education**

Planned term

Autumn 1

Memorable experience

Imaginary trip to Sri Lanka

Innovate challenge

Exploring remembering and memories

Religious education

Buddha; Sacred places; Memories and remembering



Harvest **Religious education**

Planned term

Autumn 2

Memorable experience

Making crumble

Innovate challenge

Thinking about sharing

Religious education

Harvest; Sharing



Purim **Religious education**

Planned term

Spring 1

Memorable experience

Make some noise

Innovate challenge

Thinking about gifts

Religious education

Special clothes; Story of Esther; Purim customs; Gifts



Milad un Nabi **Religious education**

Planned term

Spring 2

Memorable experience

Birthday celebrations

Innovate challenge

Thinking about leadership

Religious education

Muhammad; The first Muslim; Leadership



Diwali **Religious education**

Planned term

Summer 1

Memorable experience

Making diva lamps

Innovate challenge

Exploring good luck

Religious education

Divya lamps; New beginnings; Diwali traditions; Luck



Naam Karan **Religious education**

Planned term

Summer 2

Memorable experience

Nursery role play

Innovate challenge

Exploring family

Religious education

Gurdwara; Guru Granth Sahib; Naming ceremony; Families

Gurdwara; Guru Granth Sahib; Naming ceremony; Families